

MODEL 818 INNOVATION^[E] WTP

GANTRY MOUNTED TOP LIFT SPREADER
FOR LADEN CONTAINER HANDLING



Standard supply includes:

- ♦ Mounting arrangement to fit the gantry*
- ♦ Mechanical pile slope (MPS)
- ♦ Powered pile slope (PPS) via gantry available as an option
- ♦ Four vertical pendular ISO twistlocks
- ♦ Combined lifting hook and lifting eye
- ♦ Hydraulic telescoping
- ♦ Hydraulic slew and reach
- ♦ Solenoid valves for all hydraulic functions
- ♦ Electric twistlock indication system
- ♦ Electric and mechanical twistlock protection system
- ♦ Electric telescoping protection system
- ♦ Lift interrupt signal
- ♦ LED-indication lights
- ♦ LED-work lights
- ♦ WTP

ELME Spreader Model 818 INNOVATION WTP is the New Generation telescopic top lift spreader for handling of laden ISO, WTP and US-domestic containers weighing up to 45 tonnes. 818 INNOVATION WTP is designed for use under a gantry at the front of a lift truck.

The strong and basic concept offers distinct advantages, such as two parallel telescopic beams, assuring max overlap. The beam sections are dimensioned to absorb not only the vertical, but also the very considerable horizontal forces.

INNOVATIVE DESIGN

INNOVATION's new and improved design implies a New Generation 818 INNOVATION WTP spreader with the unique combination of increased structural strength and reduced weight.

The New Generation 818 INNOVATION WTP Spreader is estimated to have an increased life expectancy of 30 % related to fatigue resistance and standard load case conditions.

The reduced spreader weight enables improvements on the lift truck design. The New Generation design also implies numerous improvements to promote easier service.

TWISTLOCK SYSTEM

The previous generations well-proven Twistlock system, manufactured in a rugged design, carries all its benefits into the New Generation of spreaders. 818 INNOVATION WTP has hardened ISO quick exchange pendular twistlocks that are hydraulically activated with mechanical interlocking against faulty locking and unlocking.

GANTRY MOUNTING WITH MECHANICAL PILE SLOPE

Gantry mounting is used for lift trucks, dedicated to container handling only. Four telescopic han-

gers connect the spreader to the gantry. Gravity assures the level position of the spreader. The hangers will allow the spreader to automatically adapt to containers on trailers or on uneven ground.

TELESCOPING, SLEW, REACH AND SIDESHIFT SYSTEM

Telescoping is powered by one hydraulic cylinder for each end beam and sideshift is executed by one hydraulic cylinder. The slew and reach motions are possible thanks to two hydraulic cylinders that connect the spreader to the gantry. By powering either one or both cylinders, the slew and reach functions are activated.

WTP-SYSTEM

The WTP option built into the spreader endbeams allows the operator to hydraulically change the twistlock positions to handle ISO and US-domestic containers as well as WTP containers.

CONTROL AND PROTECTION SYSTEM

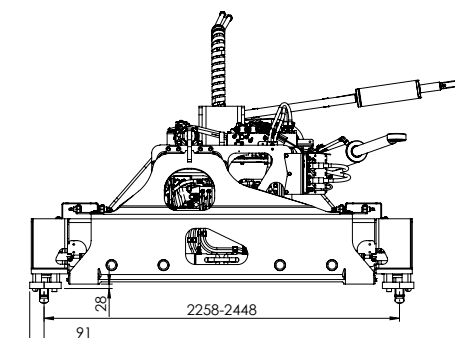
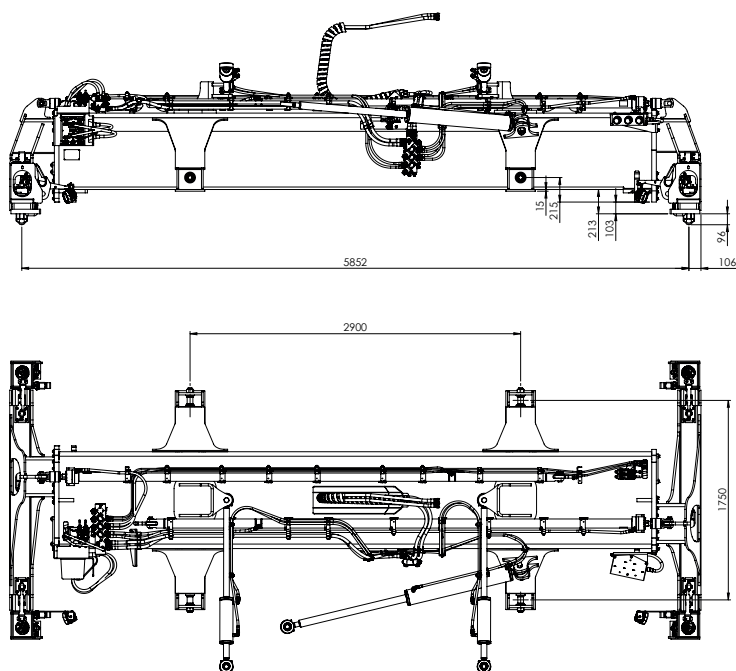
The ELME Neuron CAN bus system, designed for maximum robustness, monitors the state of the spreader at all times. Indicator lights advise the operator when the spreader is correctly seated, locked or not locked. Each signal is a precondition for the important protection functions of the spreader such as twistlock activation, telescoping and lift interrupt.

Neuron uses J1939 protocol which provides fault code messaging to alert driver and maintenance personnel of possible component failures.

*Gantry for the spreader is not included.
To be ordered separately.

MODEL 818 INNOVATION^[E] WTP

© January 2023 ELME Spreader AB

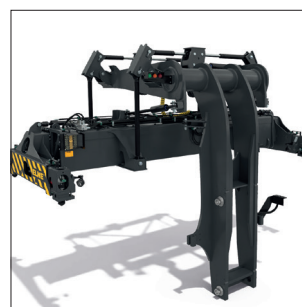


TECHNICAL SPECIFICATIONS

Type of application	Gantry mounted
Type of lifting system	Four vertical twistlocks
Spreader weight (TW)	7 000 kg without extra equipment
Lifting capacity (SWL), spreader	45 tonnes \pm 10 % eccentric load
Lifting capacity (SWL), lifting eyes	4 x 11,25 tonnes
Twistlock	ISO pendular 20 mm
WTP-option	< 5 sec. ISO pos. \geq 258 mm WTP pos. \geq 448 mm
Telescopic positions	20 and 40ft
Telescoping speed, 20-40ft	< 20 sec.
Telescoping speed, 40-20ft	< 25 sec.
Slew	\pm 6°
Reach	+125/-105 mm
Sideshift, \pm 400 mm	7 sec.
Mechanical pile slope (MPS)	\pm 6°
Hydraulics, operating pressure up to	140 bar
Hydraulics, flow	60 L/min
Electric - control voltage	24 VDC
Communication	CAN 2.0B
Colour	Black grey RAL 7021



Improved design with combined lifting hook and lifting eye.



818 INNOVATION WTP with optional PPS Gantry.

All specifications are subject to change without notice. A list of options enables you to adapt the product more precisely to your needs and further information is available on request.

HEAD QUARTER AND PRODUCTION ELME Spreader AB

Phone +46 10 222 18 00
Email sales@elme.com
Website www.elme.com

SALES AND SPARE PARTS ELME Spreader Trading (Shanghai) Co., Ltd

Phone +86 21 5169 8922
Email sales.cn@elme.com

SPARE PARTS ELME Americas Inc.

Phone +1 731 588 02 20
+1 731 332 09 29
Email sales.us@elme.com

Visit www.elme.com for details, spare parts and more products.

ELMETM
Swedish Spreader Systems