

MODEL 8610 NA WTP

FOR LADEN CONTAINER AND TRAILER HANDLING WITH
RAIL MOUNTED OR RUBBER TYRED GANTRY CRANES



Standard supply includes:

- ◆ Mounting arrangement to fit crane
- ◆ Four vertical pendular ISO twistlocks
- ◆ Lifting eyes near twistlocks
- ◆ Hydraulic telescoping
- ◆ Hydraulic stops
- ◆ Hydraulic leg folding
- ◆ Hydraulic clamp and unclamp
- ◆ Solenoid valves for all hydraulic functions
- ◆ Four foldable piggyback legs in an automatic sequence with block stacking
- ◆ Electrical and mechanical twistlock protection and indication system
- ◆ Electric telescoping protection system
- ◆ Electrical protection indication system for trailer handling
- ◆ Lift interrupt signal
- ◆ LED-indication lights
- ◆ WTP
- ◆ North American trailer handling

Spreader Model 8610 NA WTP is a telescopic piggyback spreader for intermodal handling of laden ISO containers and trailers up to 40 LT / 41 tonnes. 8610 is designed for mounting on Rail Mounted (RMG) or Rubber Tyred Gantry (RTG) cranes.

The strong and basic concept offers advantages, such as two parallel telescopic beams, assuring max overlap. The beam sections are dimensioned to absorb not only the vertical, but also the very considerable horizontal forces.

TWISTLOCK SYSTEM

The twistlock system is manufactured in a rugged design and is well proven since many years. 8610 has hardened, pendulling ISO quick exchange twistlocks, hydraulically activated with electrical and mechanical interlocking against faulty locking and unlocking.

TELESCOPING AND HYDRAULIC SYSTEM

Telescoping is powered by one hydraulic cylinder inside each beam. Double electric motor- and pump assemblies assure simultaneous telescoping of both beams. The spreader can be operated with one electric motor and pump.

PIGGYBACK LEGS SYSTEM

The leg arrangement is done according to the ELME design system, which is a load clamping system that involves all four foldable piggyback legs in an automatic sequence. Thanks to this feature the

spreader can be lowered between containers that are block stacked front to front and side to side. Integrated in each leg/foot is a clamping sensor that signals to the driver that the trailer is ready to be lifted.

The folding is sequential as standard but outside of the 30ft-position it is parallel for reduced folding/unfolding time.

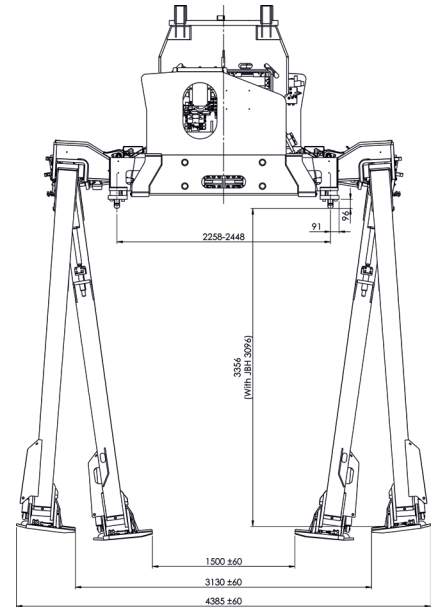
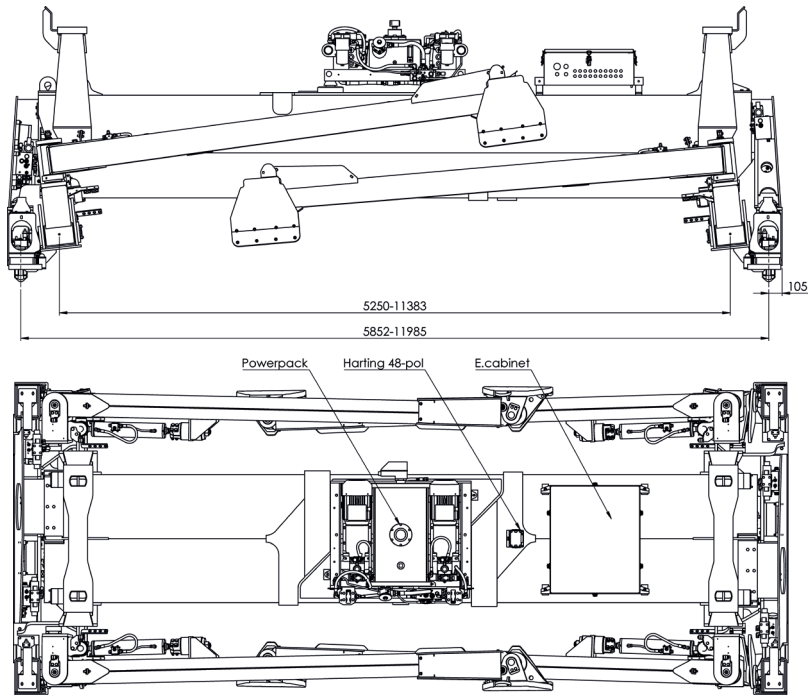
WTP-SYSTEM

The WTP option built into the spreader endbeams allows the operator to hydraulically change the twistlock positions to handle ISO and US-domestic containers as well as WTP containers.

CONTROL AND PROTECTION SYSTEM

The control voltage on the spreader is always converted to 24V DC for safety and reliability. Electrical systems monitor the state of the spreader at all times. Indicator lights advise the operator when the spreader is correctly seated and in intermodal mode, locked or unlocked. The signals are preconditions for the important protection functions of the spreader such as twistlock activation, telescoping, piggyback legs and lift interrupt.

MODEL 8610 NA WTP



TECHNICAL SPECIFICATIONS

Type of application	RTG, RMG
Type of lifting system	Four twistlocks or four piggyback legs
Type of stacking	Normal and block stacking
Spreader weight (TW)	14 000 kg without extra equipment
Lifting capacity (SWL), spreader	40 LT / 41 tonnes ± 10 % eccentric load
Lifting capacity (SWL), piggyback	40 LT / 41 tonnes ± 10 % eccentric load
Lifting capacity (SWL), lifting eyes	4 x 10 tonnes
Twistlock	ISO pendular 20 mm
WTP-option	< 5 sec.* ISO pos. 2 258 mm WTP pos. 2 448 mm
Telescopic positions	20, 30 and 40ft
Telescoping speed from 20-40ft	< 25 sec.*
Leg clamping distance, min / max	1 500 ± 60 mm / 3 130 ± 60 mm
Leg centre distance, min / max	5 250 - 11 383 mm
Leg, down time / Leg, up time	< 29 sec.* / < 25 sec.*
Hydraulics, operating pressure up to	140 bar
Hydraulics, flow / tank volume	56 L/min (2x28) / 90 L
Power supply	480 VAC/60 Hz
Electrical motors	2 x 7,5 kW
Electric - control voltage	24 VDC
Colour	Signal yellow RAL 1003
Paint thickness	220 µ

* Calculated speed at 20° C

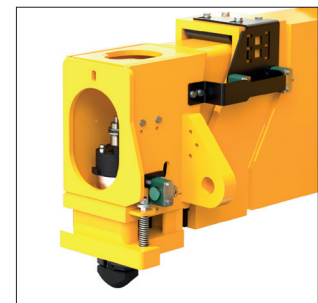
All specifications are subject to change without notice. A list of options enables you to adapt the product more precisely to your needs and further information is available on request.



8610 NA WTP.



Piggyback foot, North American standard.



Twistlock and lifting eye.

HEAD QUARTER AND PRODUCTION

ELME Spreader AB

Phone +46 10 222 18 00
Email sales@elme.com
Website www.elme.com

SALES AND SPARE PARTS

ELME Spreader Trading (Shanghai) Co., Ltd

Phone +86 21 5169 8922
Email sales.cn@elme.com

SPARE PARTS

ELME Americas Inc.

Phone +1 731 588 02 20
+1 731 332 09 29
Email sales.us@elme.com

Visit www.elme.com for details, spare parts and more products.

ELMETM
Swedish Spreader Systems