

MANUAL

Servicebox 817 WTP

Servicebox 818 WTP



Thank you for purchasing this Servicebox to your 817 WTP / 818 WTP!

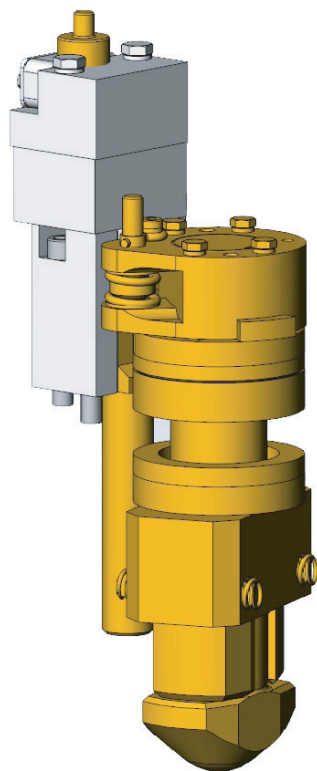
This guide provides the information needed to service and maintain your spreader at 5,000 hour service. A spreader used and serviced properly retain their qualities for a long and profitable life in service, and you get the full advantage of all the features.

Maintenance may only be carried out by qualified personnel.

For more detailed information about spare parts and service instructions, we refer to our manual for the specific spreader.

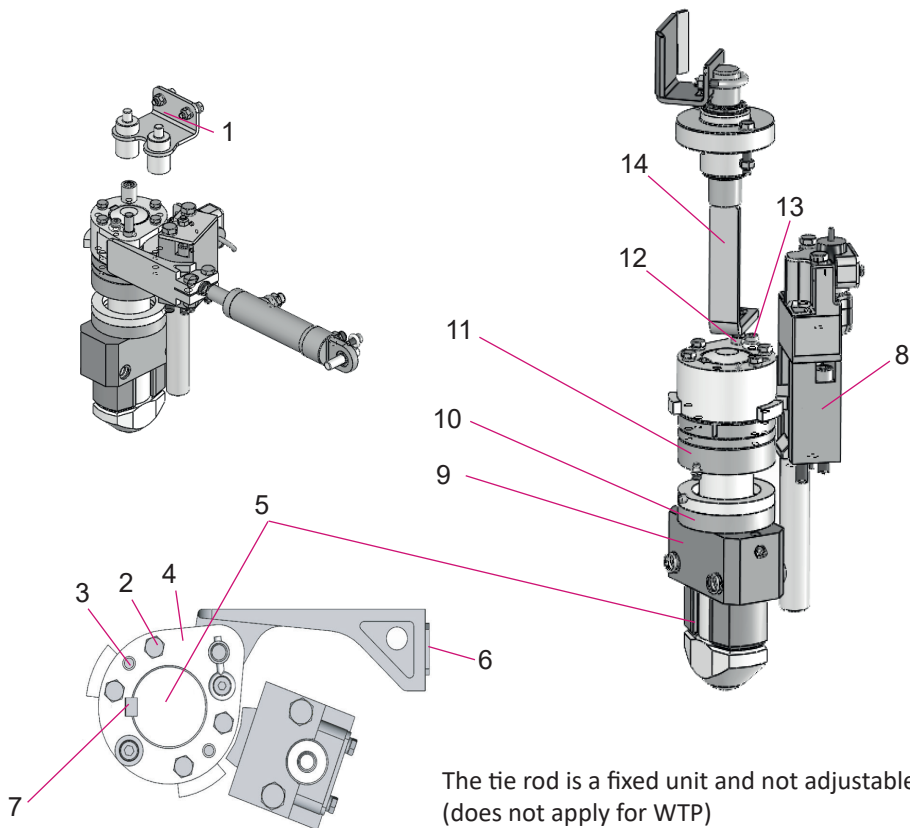
Index

Twistlock Assembly	4-9
Wear pads	10-11
Back up Parts	12-16
Summary of all parts included	17
Why use Genuine Parts?	19



TWISTLOCK ASSEMBLY

The twistlock is a genuine ELME part, which is certified and marked with a unique serial number.



To remove the tie-rod proceed as follows:

- 1 Remove the indicator assy. (item 14) or the Locked / Not locked sensor bracket (item 1), if it is a spreader with WTP or with overheight legs.
- 2 Loosen one of the adjuster bolts at the twistlock cylinder, enough to give some play.
- 3 Loosen and remove the M8 x 80 bolts (item 2) in the top of both twist locks in the same end beam.*
- 4 Use two of the M8 x 80 bolts (item 2) as pullers by inserting them in the two threaded holes (item 3) in each of the cranks (item 4) and tighten them alternatly until they lift the cranks (item 4) off the top of the twistlock shaft (item 5).

- 5 The tie-rod (item 6) including both cranks (item 4) can now be removed from the end beam.*

To remove the twistlock and sleeve proceed as follows:

- 6 The key (item 7) that locates the crank (item 4) to the twistlock (item 5) is held in place on the twistlock by a roll pin so that it will remain in place on the twistlock after the crank is removed.
- 7 Support the twistlock (item 5) from below so that it does not drop out. Using a screwdriver prise the collets (item 8) out of the recess in the twistlock (item 5). It is now possible to lower the twistlock out of the end beam. The sleeve (item 9) and lower bearing set (item 10) will in most cases accompany the twistlock as it is removed. This is quite normal.

Inspection prior to reassembly

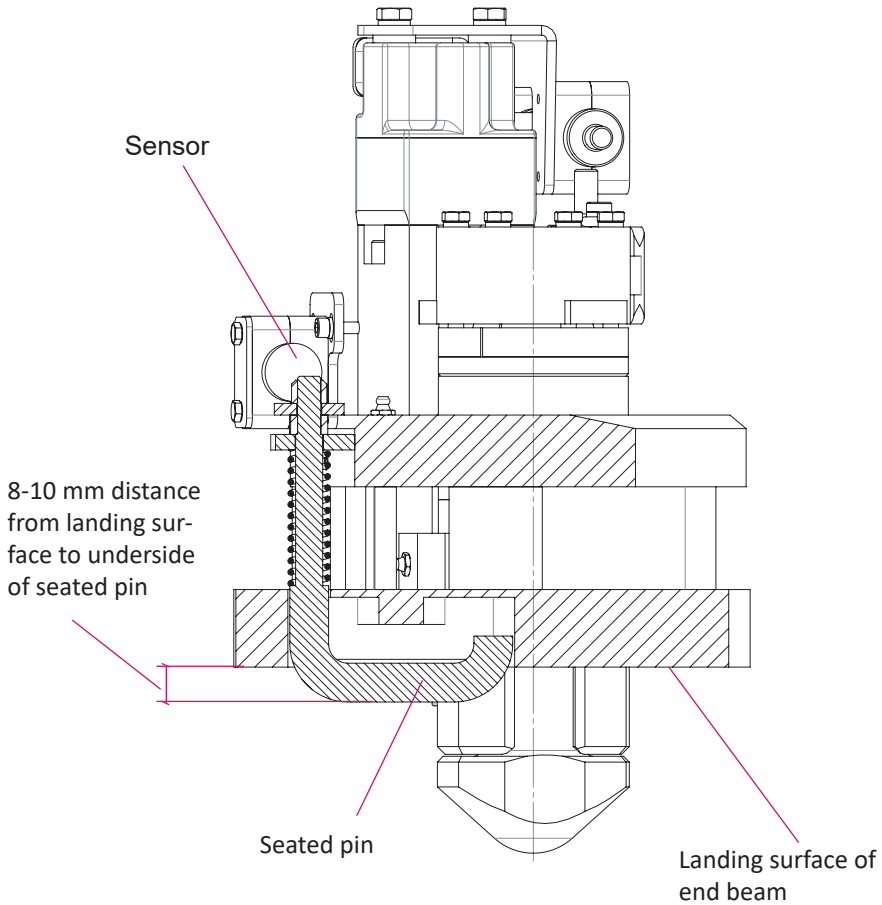
- 8 After removal of all twistlock parts, remove all grease and dirt from the parts and also from the corner of the end beam. Steam clean or clean with some form of solvent.
- 9 Heck the twistlock (item 5) for wear at the head and also for wear at the bushing surfaces. Inspect the lower (item 10) and upper (item 11) bearing sets for wear and damage. If badly worn or damaged, they should be replaced. The collets (item 8) and the crank (item 4) should be inspected for possible wear or damage and replaced if necessary.

It should be noted that the state of the collets (item 8) and the recess in the twistlock (item 5) is very important, as these parts are carrying the load when a container is lifted.

Replacing / Fitting twistlocks

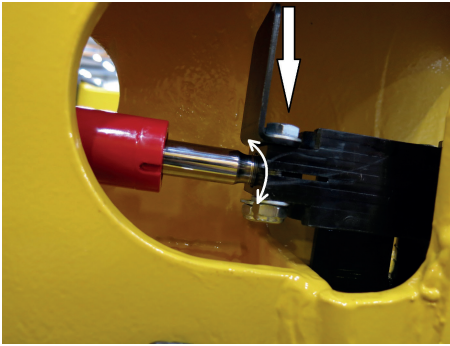
- 10 Prepare the sleeve (item 9), place and grease the bushing and fit the four centering springs in the sides of the sleeve.
- 11 Grease the upper bearing set (item 11) and place in position on the greased top surface of the corner plate (in the endbeam) with the convex half uppermost (threaded holes up). Grease the lower bearing set (item 10) and place in position on the greased bottom surface of the corner plate (in the endbeam, the grease will hold it in place).

- 12 Lift the sleeve assembly as assembled in point 10 and position up through the corner plate in the endbeam. Note the direction of the grease nipple! Then place the twistlock in the sleeve, ensuring that both bearings (item 10 and 11) are positioned correctly around the twistlock. Support the assembly with a jack or other means.
- 13 Fit the collets (item 8) with the pointed part upwards.
- 14 Fit the key (item 7) incl. roll pin to the keyway of the twistlock (item 5).
- 15 In order to fit the tie-rod (item 6), it is necessary to mount both cranks (item 4) to the tie-rod before placing it in the end beam. Fit the ball joints, O rings, and plastic washers to the tie-rod ends and then fit the fork of the crank (item 4) over the tierod end. Ensure that the countersunk ends of the securing holes in the crank are upper most. Secure the crank to the tie-rod end by fitting the pin (item 12) and then the ring pin and allen screw (item 13).
- 16 In order to simplify assembly of the crank to the twistlock, it is advisable to fit two alignment pins to the assembly. The pins can be made from two M8 x 75 bolts or allen screws with the heads removed and slightly chamfered. These pins should be screwed into the top plate of the upper bearing (item 11) diagonally so that each pin guides one half of the collets (item 8).
- 17 Insert the tie-rod (item 6) into the end beam and then fit the cranks (item 4) onto the alignment pins and ensure that the key and keyway line up. Fit two of the allens securing (item 2) in the remaining two holes and screw in and tighten lightly. Remove the alignment pins and fit the other two securing screws. The securing screws can now be tightened to approx. 25 Nm.
- 18 Activate the twistlocks to the NOT LOCKED position and then adjust the twistlock cylinder adjuster bolts, so that the twistlocks are positioned accurately in the NOT LOCKED position. Then adjust properly, see "Twistlock angle adjustment".
- 19 Grease the complete assembly with a high-pressure grease gun.



Seated / Landed signal adjustment

1. Check that the SEATED PIN can move up and down freely. The force needed to lift the pin is approx. 10 kg (20 lbs).
2. The SEATED signal should switch on with the pin protruding approx. 9mm below the landing surface of the end beam.



Picture 1



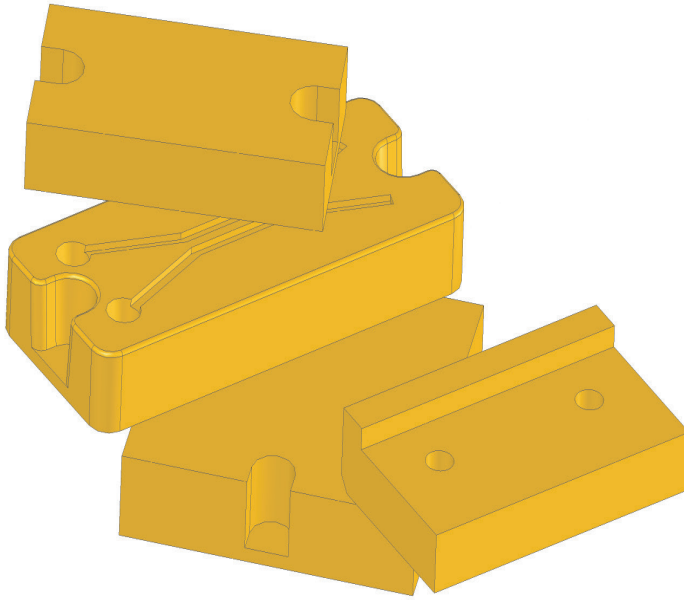
Picture 2



Picture 3

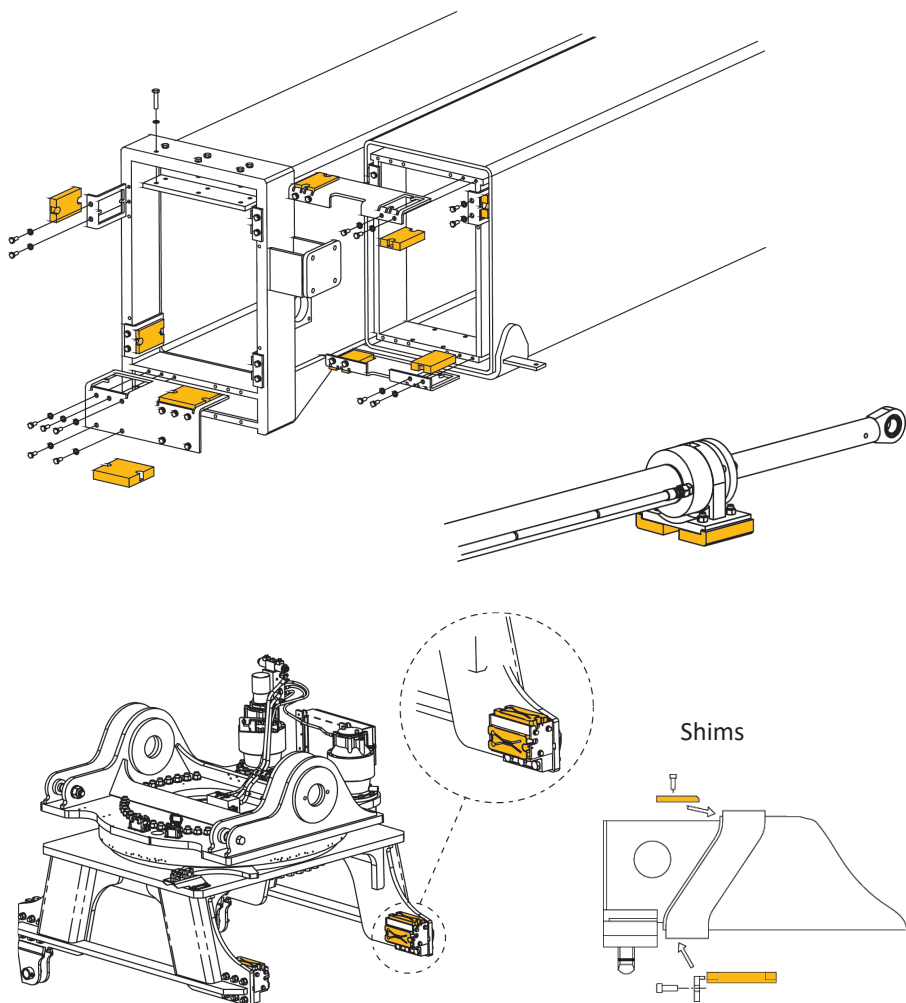
Twistlock angle adjustment

1. Turn the twistlock heads (picture 2) to the fully UNLOCKED position.
2. If the twistlock heads do not line up with the twistlock sleeve, they can be adjusted by loosening the lock nuts (see arrows in picture 1).
3. Turn the twistlocks at each end of the end beam so that they line up with the sleeves, if it is found difficult to line up the twistlocks and sleeves accurately, distribute the misalignment equally on both sides of the sleeve. Make sure that the twistlock heads DO NOT protrude outside the theoretical line between twistlocks. If the twistlocks do protrude outside the previously mentioned line between the twistlocks it can cause jamming in corner castings as the spreader is lifted off the container.
4. If necessary, turn the piston rod to line up the twistlock head with the sleeve. When lined up both in LOCKED/UNLOCKED position, tighten the lock nuts (see arrow in picture 1).
5. Activate the twistlocks to the LOCKED position and check that the twist lock heads are $90^{\circ} \pm 10^{\circ}$ to the twistlock sleeve (see picture 3).



WEAR PADS

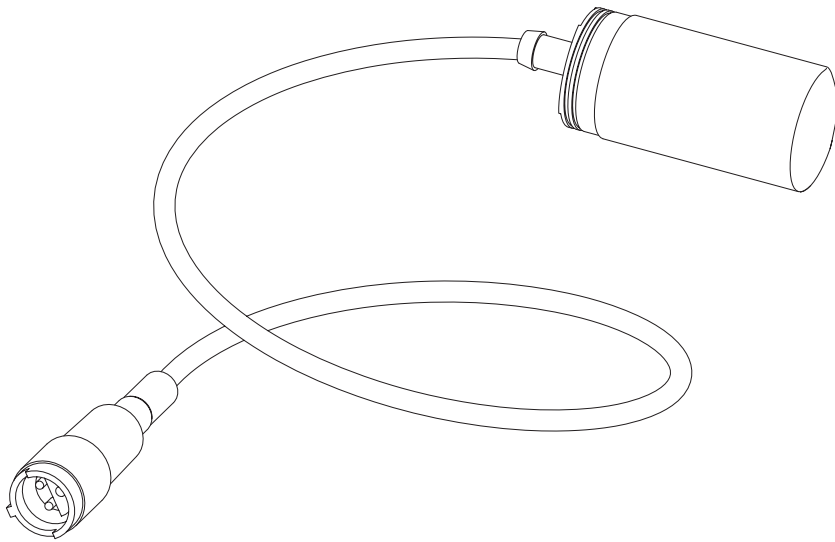
To eliminate mechanical friction, there are plastic pads between extension beams and main frame. The pads are positioned for support to reduce and also to absorb horizontal and vertical shock loads, they are mounted in several retainers. This design makes inspection and replacement easy. There are also plastic pads underneath the extension cylinders and between rotator and main frame, see next page.



The nylon wear pads should be inspected for wear at the same time as their tracks are lubricated. Replacing the wear pads can be done with ordinary hand tools and without removing the beams.



The nylon wear pads should be replaced before they are worn down to the steel of their brackets.



BACK UP PARTS

A number of back up parts are also included in this servicebox, in case of breakdown.

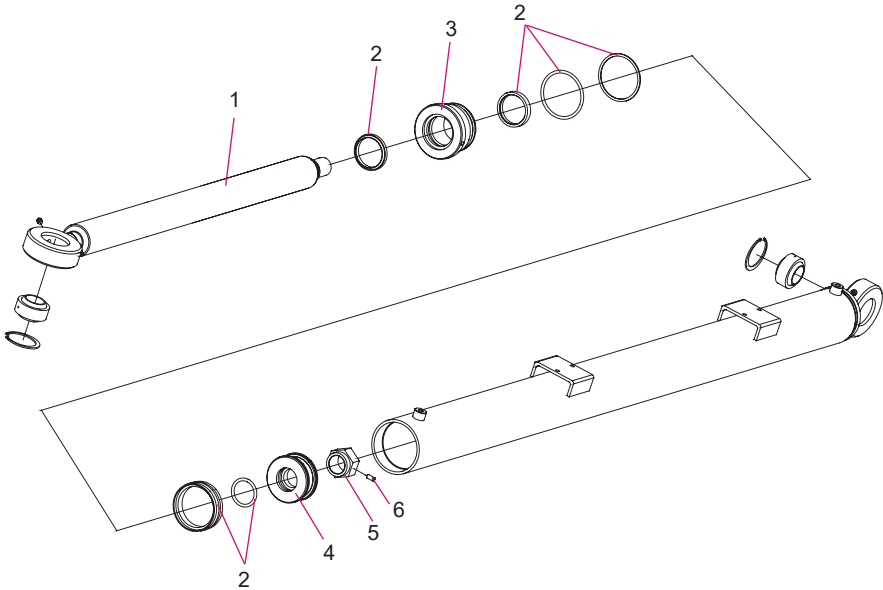
Proximity switch

For replacement of proximity switch / sensor in twistlock assembly.

Seal kits

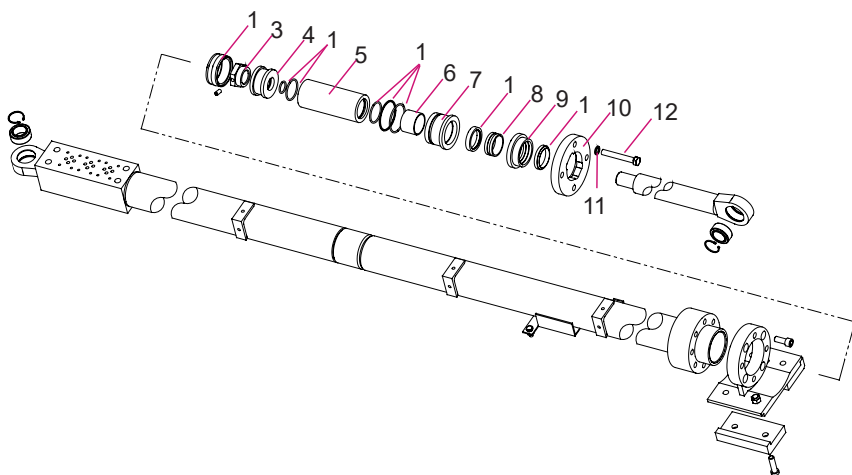
For replacement of seal kits in extension, sideshift, twistlock and WTP cylinders.

See instructions on following pages.



Seal replacement - Sideshift cylinder

Remove the side shift cylinder or tie up the cylinder when working on the spreader. Loosen gland (item 3) and hydraulic hoses and pull out the piston rod (item 1). Be careful not to damage the piston rod when removing and beware of the oil spill. Use a drift punch to remove the roll pin (item 6) and remove the nut (item 5), the piston (item 4) and the gland (item 3) from the piston rod. Check the piston rod and cylinder for damages that can cause leakage and repair or replace when necessary. Carefully remove the seals (items 2), do not damage the surfaces. Clean all parts. Place the new seals with oil or grease. Place the gland and the piston on the piston rod, tighten the nut and secure it with the roll pin. Slide the piston rod assy. into the cylinder and tighten the gland.

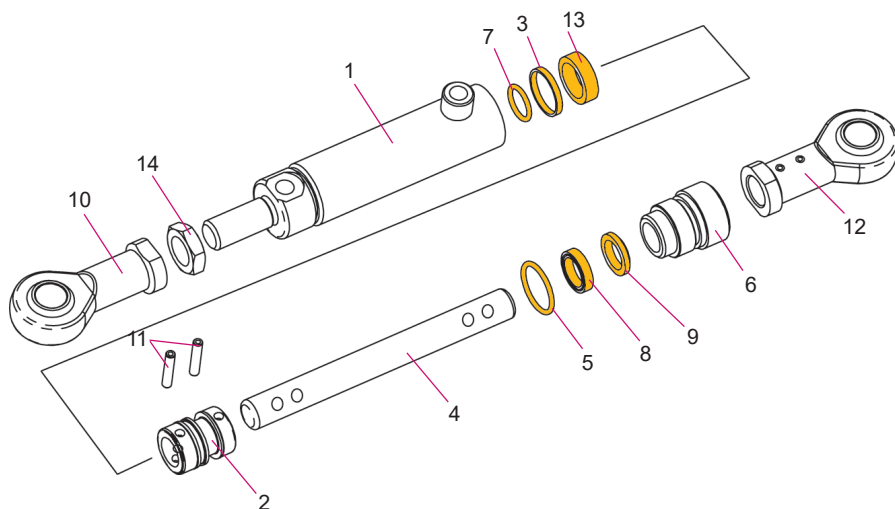


Seal replacement - Extension cylinder

Remove the extension cylinder. Remove the 140 Bar relief valve from the side of the extension cylinder valve. (Wrench 7/8"). Remove the bolts (item 12), and place the ring (item 10) on the painted front side of the piston rod, so that it cannot damage the surface of the rod.

Pull out the piston rod, beware of the oil spill (place the hydraulic hose from the front end in a oil bin) and be carefull not to damage the piston rod. Use a drift punch to remove the roll pin (item 2) and remove the nut (item 3), the piston (item 4), the spacer (item 5), the gland (item 7) and the washer (item 9). Check the piston rod and cylinder for damages that can cause leakage and repair or replace when necessary. Carefully remove the seals (items 1). Do not damage the surfaces. Check the bushing (item 6) and the guide ring (item 8) and replace if necessary. Clean all parts.

Place the new seals with oil or grease. Place the washer, gland, spacer and piston on the piston rod, tighten the nut and secure it with the roll pin. Slide the piston rod assembly into the cylinder, place the ring (item 10) and tighten the bolts evenly (78 Nm). Place the 140 Bar relief valve and tighten it. (45 Nm).

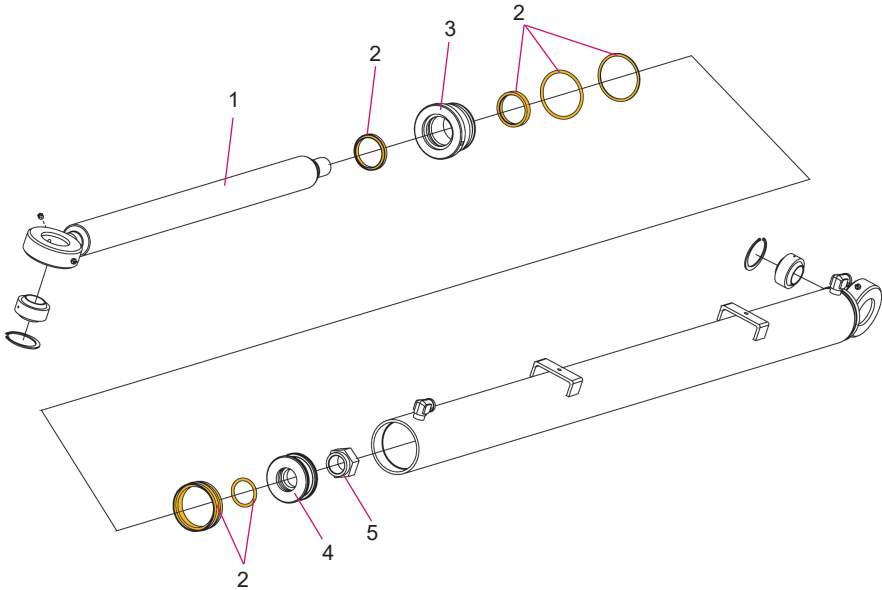


Seal replacement - Twistlock cylinder

Loosen the gland (item 6) and pull out the piston rod (item 4), no need to loosen the rod head. Use a drift punch to remove the roll pins (item 11) from the piston (item 2) and remove the piston and the gland from the rod.

Carefully remove the seals (items 7, 3, 13, 5, 8 and 9), do not damage the surfaces. Check the piston rod and cylinder for damages that can cause leakage and repair or replace when necessary.

Clean all parts. Place the new seals with oil or grease. Place the gland and the piston on the piston rod so that the securing holes line up and place the roll pins. Slide the piston rod assembly in the cylinder and tighten the gland.



Seal replacement - WTP cylinder

Loosen gland (item 3) and hydraulic hoses and pull out the piston rod (item 1). Be careful not to damage the piston rod when removing and beware of the oil spill. Remove the nut (item 5), the piston (item 4) and the gland (item 3) from the piston rod. Check the piston rod and cylinder for damages that can cause leakage and repair or replace when necessary.

Carefully remove the seals (items 2), do not damage the surfaces. Clean all parts. Place the new seals with oil or grease. Place the gland and the piston on the piston rod, tighten the nut and secure it with the roll pin. Slide the piston rod assy. into the cylinder and tighten the gland.

Summary of all parts included in the box:

Twistlock Assembly

2x	Twistlock kit
2x	Twistlock kit
4x	Seated pin
4x	Seated pin ISO/WTP
4x	Nut (on indication arm)
4x	Nut (on seated pin ISO/WTP)
4x	Nut (on seated pin ISO/WTP)
4x	Washer (on seated pin ISO/WTP)
4x	Bracket
4x	Indicator arm
4x	Spring (on tie rod)
4x	Spring (on indicator arm)
4x	Spring (on seated pin ISO/WTP)
4x	Tie rod

Wear pads

20x	Wear pad - Mainframe/ Extension beam
4x	Wear pad - Mainframe
4x	Wear pad - Extension cylinder
8x	Wear pad/shims - WTP beam
8x	Wear pad - Carriage (for 817)

Back up Parts

4x	Proximity switch
1x	Seal kit - Sideshift cylinder (for 817)
1x	Seal kit - Extension cylinder
1x	Seal kit - Twistlock cylinder
1x	Seal kit - WTP cylinder
1x	Seal kit - Sideshift/818, sidetilt/817
1x	Seal kit - Slew reach/818, power damping/817



Servicebox

The idea of the serviceboxes is to facilitate to get selected genuine spare parts in one box. The boxes include in fact all the parts we consider needed to be replaced at service.

Buying the servicebox directly together with an equipped machine ensures that the Elme spreader continues to hold a high level in terms of dependability and reliability.

Additionally, it ensures low downtime and is more economical than buying the parts individually as well as having all parts in place. Also, it makes sure that the spreader is kept in good condition by regularly service checkups!

Download

Manuals for all serviceboxes are available on our website!
Please visit elme.com. You will find the manuals under About Us/Downloads.

Why use Genuine Parts?



ELME GENUINE PARTS

By using ELME genuine parts, you always get parts you can rely on and true peace of mind. If you are using non-genuine parts, you put weak links into a strong, perfectly designed chain of interactive components. Please note that non-genuine parts are made by factories that have not been approved by ELME and they are often manufactured to be as cheap as possible, using inferior materials, workmanship and by reversed engineering. Non-genuine parts are high risk. Real cost and real risk is measured not in the price, but in the cost of the component in the event of failure. Use of non-genuine parts may lead to higher downtime and lower productivity due to more frequent failures. For correct operation of the spreader, only ELME Genuine Parts and accessories which are approved by ELME should be used. If non-genuine parts are used, the warranty is not valid. By using ELME Genuine Parts and accessories approved by ELME, you will maintain original standard. ELME will disclaim all responsibility if parts from third party are used.

INSPECTION/MAINTENANCE

Always inspect your spreader before using it. If any kind of damage is detected – which may affect the function of the spreader - this must be corrected before use. If the spreader needs to be repaired, please contact a specialist and see to that only ELME Genuine Parts are used if need of replacement. This is to ensure that the spreader still is reliable. Repairs made by a non-qualified person or use of non-genuine parts may lead to increased risk of personal injuries or damages. Service and maintenance are necessary to keep capacity and efficiency of the spreader for many years.

MODIFICATION OF THE SPREADER/PRODUCT LIABILITY/WARRANTY

For the avoidance of doubt, ELME is not liable in case of damage due to factors beyond ELME's control or due to a lack of maintenance or the use of non-genuine parts. The spreader should not be modified without consultation with ELME. If so, this means that the spreader is not CE approved and thus ELME has no product liability.



HEADOFFICE

ELME Spreader AB
Älmhult, Sweden
sales@elme.com
www.elme.com

SALES AND SPARE PARTS

ELME Spreader Trading (Shanghai) Co. Ltd
Shanghai, China
sales.cn@elme.cn

SPARE PARTS

ELME Americas Inc.
Martin, TN, United States
sales.us@elme.com

ELMETM
Swedish Spreader Systems