

# MODEL 589TB INNOVATION<sup>[E]</sup>

FOR EMPTY CONTAINER HANDLING  
WITH LIFT TRUCKS



## Standard supply includes:

- ◆ Integrated mounting to fit the truck
- ◆ Mechanical pile slope (MPS), floating function in the end-posts
- ◆ Powered pile slope (PPS) available as an option
- ◆ Two vertical ISO twistlocks
- ◆ Hydraulically adjustable head
- ◆ Hydraulic telescoping
- ◆ Hydraulic sideshift
- ◆ Solenoid valves for all hydraulic functions
- ◆ Electrical and mechanical twistlock protection system
- ◆ Electric twistlock indication
- ◆ Electric telescoping protection system
- ◆ Lift interrupt signal
- ◆ 3x LED indication lights
- ◆ 4x LED work lights (1000 lumen/light)

**The ELME Spreader Model 589TB INNOVATION is the New Generation telescopic side lift spreader with vertical twistlocks for the handling of single empty 20 to 40ft ISO and Binnencontainers with a width up to 8'6".**

589TB INNOVATION is designed to be integrated in the mast of a forklift truck. The spreader's head is hydraulically adjustable to handle ISO and Binnencontainer corner castings with container widths up to 8'6". It also handles one 45ft container in 40ft's position.

## INNOVATIVE DESIGN

INNOVATION's heavy duty single handling spreader originates from the double handling design concept. The new and improved design implies a reinforced spreader with an increased structural strength, enhanced durability, optimized hydraulic system, increased visibility for the driver and numerous other improvements for an outstanding functionality.

Mechanical pile slope (MPS) in 589TB INN. are vertical floating end-posts, including the bottom support. Floating end-posts simplifies picking up containers in a slanted angle.

## TWISTLOCK SYSTEM

The twistlock system is manufactured in a rugged design and is well-proven since many years.

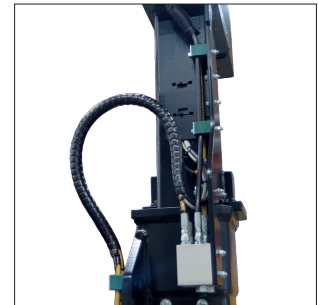
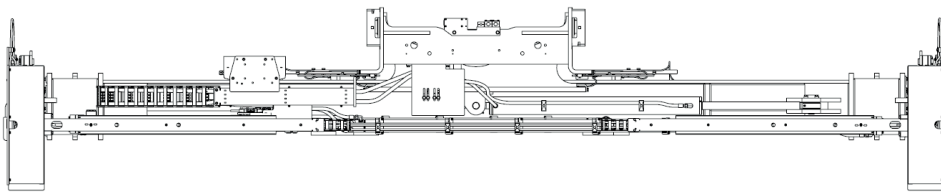
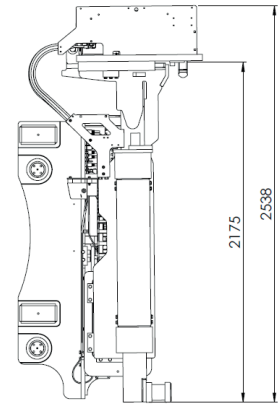
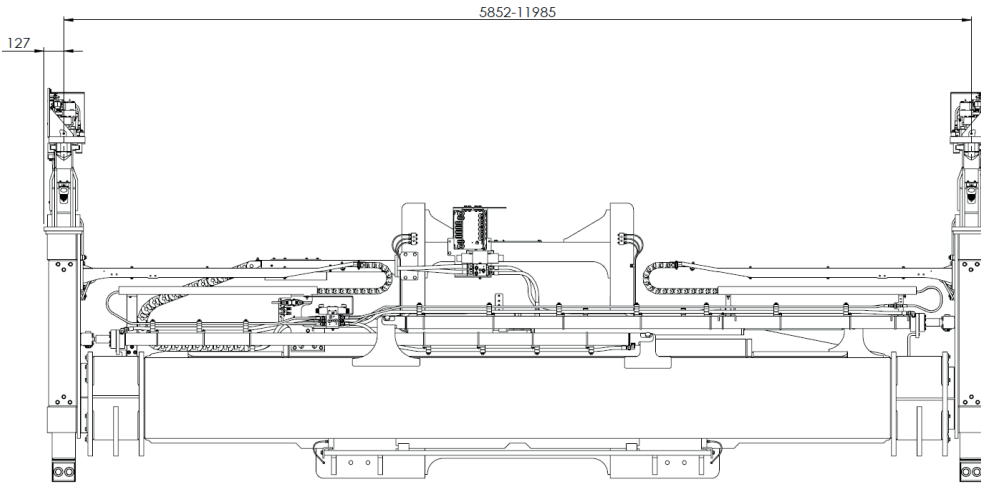
589TB INN. has hardened ISO quick exchange twistlocks, hydraulically activated and mechanical interlocking against faulty locking and unlocking. The vertical twistlock principle offers the following features:

- ◆ Two twistlocks enter the top corner castings and lock the spreader onto the container.
- ◆ 589TB INNOVATION's width is adapted to the dimensions of the container, which means that all containers can be fully blockstacked and still remain accessible.

## CONTROL AND PROTECTION SYSTEM

The ELME Neuron CAN bus system, designed for maximum robustness, monitors the state of the spreader at all times. Indicator lights advise the operator when the spreader is correctly seated, locked or not locked. Each signal is a precondition for the important protection functions of the spreader such as twistlock activation, telescoping and lift interrupt. Neuron uses J1939 protocol which provides fault code messaging to alert driver and maintenance personnel of possible component failures.

# MODEL 589TB INNOVATION<sup>[E]</sup>



Improved design with built-in cabling and larger bending radius for hydraulic hose between pocket and end-post.

## TECHNICAL SPECIFICATIONS

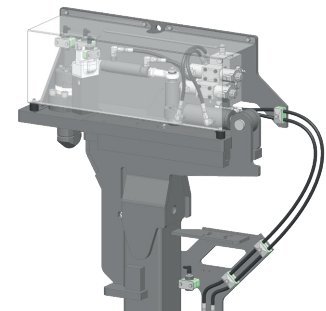
Type of lifting system	Two vertical ISO twistlocks
Type of stacking	Normal and block stacking
Spreader weight (TW)	3 800 kg
Carriage weight (MPS)	Approx. 1 000 kg
Lifting capacity (SWL)	9 tonnes
Telescopic positions	20 and 40ft
Telescoping speed, 20-40ft	< 12 sec.*
Telescoping speed, 40-20ft	< 14 sec.*
Sideshift	± 600 optional ± 400 mm
Mechanical pileslope (MPS), vertical floating end-posts	At 20ft position: approx. 200 mm At 40ft position: approx. 200 mm
Hydraulics, operating pressure up to	140 bar
Hydraulics, flow	Max. 60 L/min
Electric - control voltage	24 VDC
Communication	CAN 2.0B
Colour	Black grey RAL 7021

\* Calculated speed at 60 L/min

All specifications are subject to change without notice. A list of options enables you to adapt the product more precisely to your needs and further information is available on request.



589TB INNOVATION head.



The head is hydraulically adjustable to match different container widths such as ISO and Binnencontainers up to 8'6" wide.

## HEAD QUARTER AND PRODUCTION

### ELME Spreader AB

Phone +46 10 222 18 00  
Email sales@elme.com  
Website www.elme.com

## SALES AND SPARE PARTS

### ELME Spreader Trading (Shanghai) Co., Ltd

Phone +86 21 5169 8922  
Email sales.cn@elme.com

## SPARE PARTS

### ELME Americas Inc.

Phone +1 731 588 02 20  
Email sales.us@elme.com

For details, spare parts and more products, visit [www.elme.com](http://www.elme.com).